

** When printing this pattern, please print it without any margins at actual size.

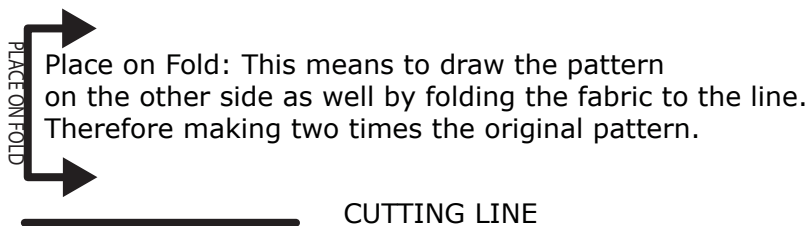
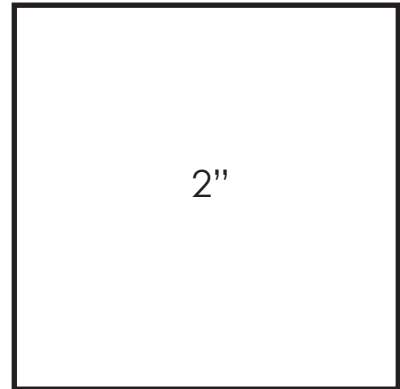
** After printing the pattern and taping the pieces together, please follow the reference the provided size guide (3" or 5").

** If the pattern fits inside a single page of letter and/or A4 paper then taping is not required.

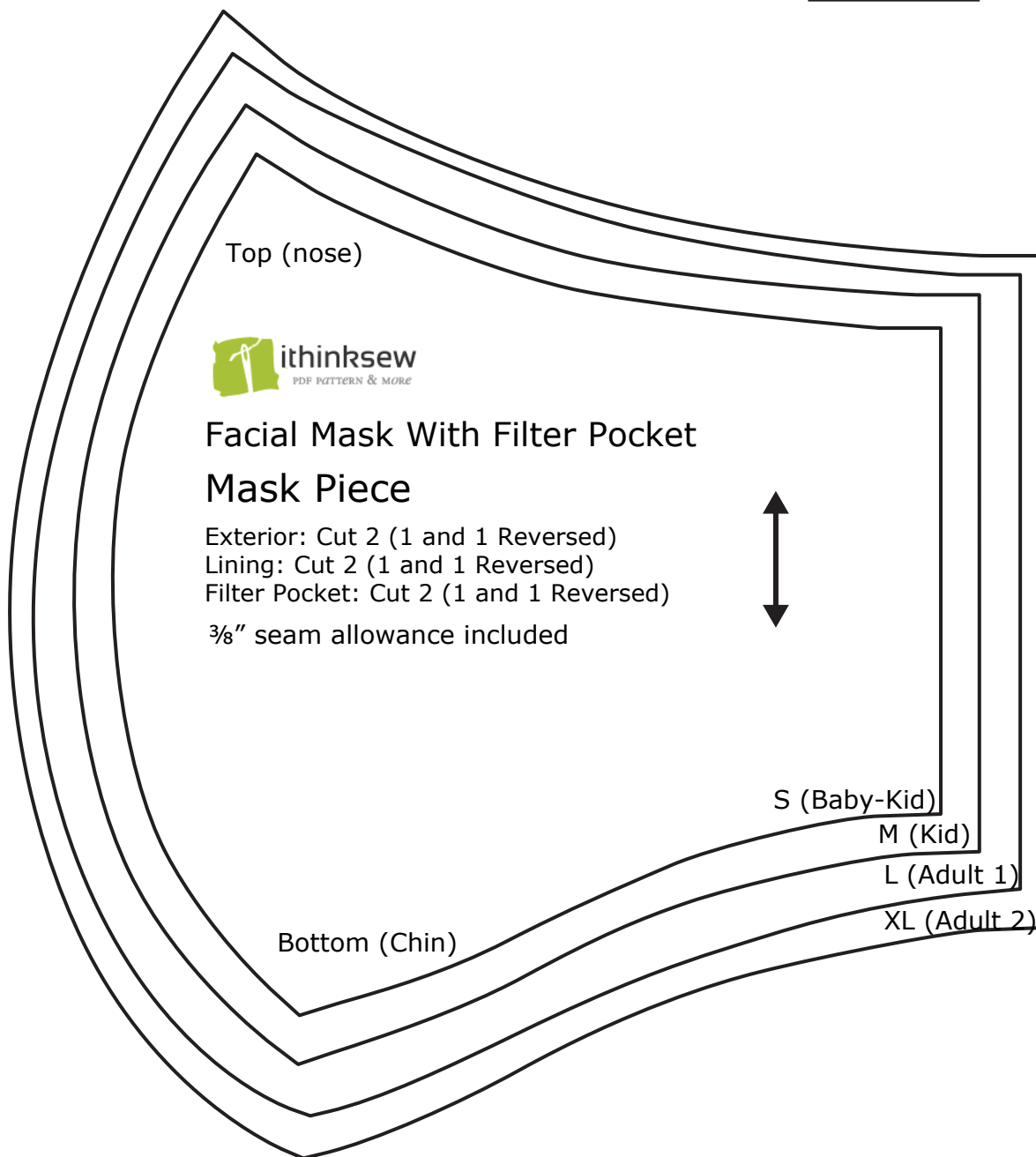
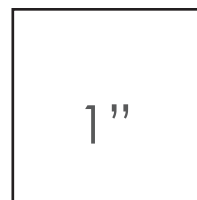
** Patterns marked as A4 are for users who utilize the A4 standard paper size.

** Patterns marked as A4 are for users who utilize the A4 standard paper size.
If the pattern fits inside a single page of letter and/or A4 paper then a separate A4 size file is not included, as the pattern will work with both paper sizes

** If you experience that certain parts of the pattern are not printing, you should be able to ignore those near the edge/border. These are usually just guides & signs.



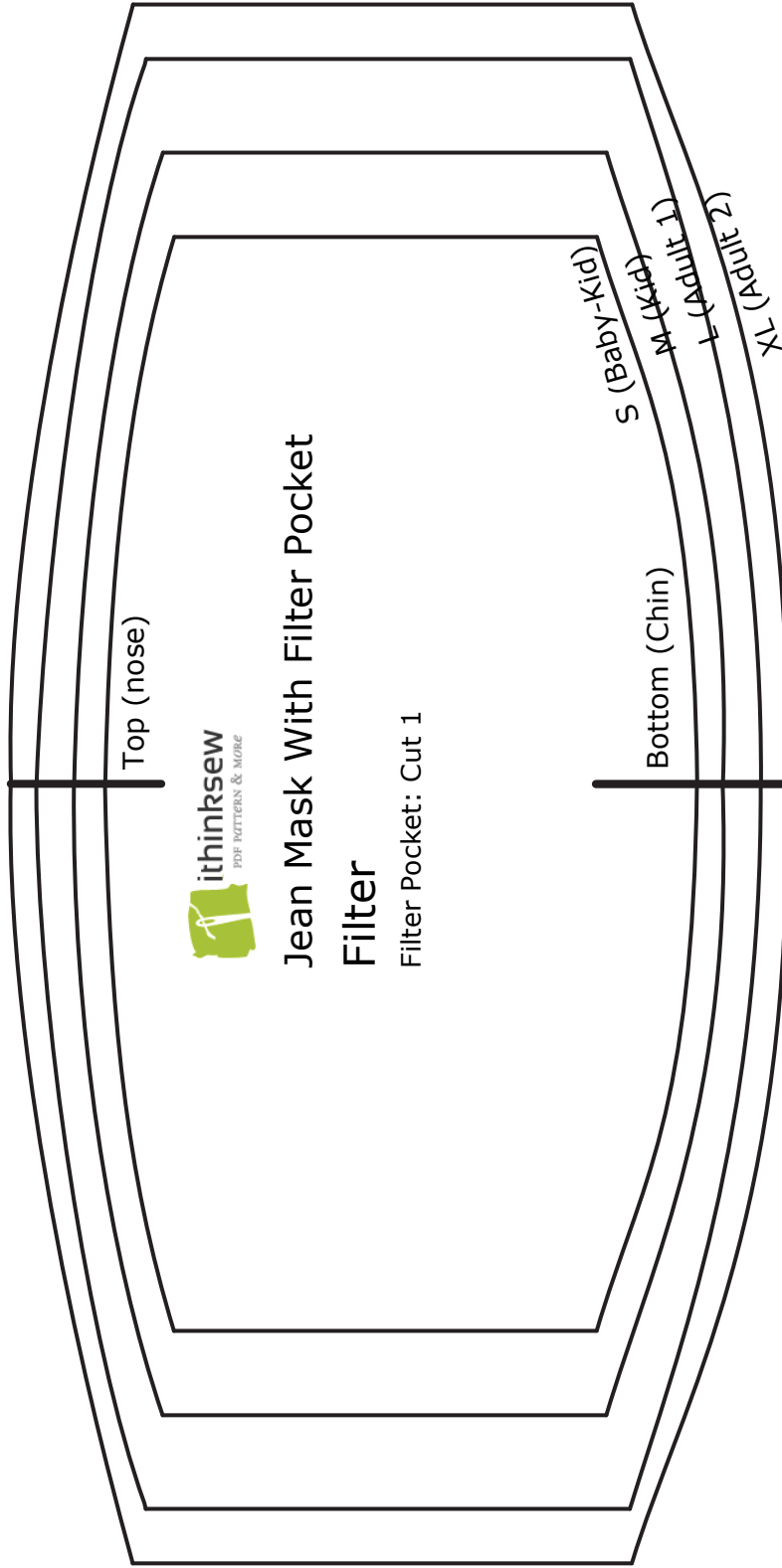
© 2020 Copyright of ithinksew.com
Personal use only.



Size: S(Baby- Kids), M(Kids), L(Adult), XL(Adult)

3"(7.62cm)

3" (7.62cm)



3" (7.62cm)